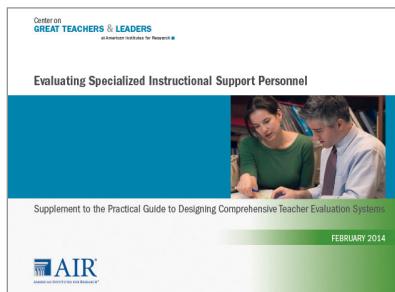


FEATURED RESOURCES FROM THE CENTER ON GREAT TEACHERS AND LEADERS

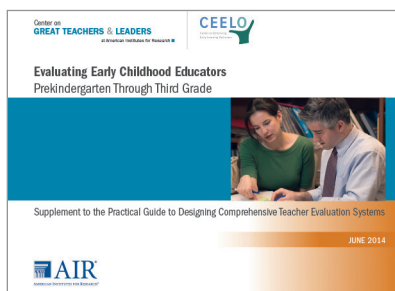
Educator Evaluation Systems Designed to Reflect Specific Roles, Responsibilities, and Context



Evaluating Specialized Instructional Support Personnel (SISP) *Supplement to the Practical Guide to Designing Teacher Evaluation Systems*

February 2014

Learn how to design evaluation systems that account for the unique roles and responsibilities of specialized instructional support personnel. For more information and to download a copy of the guide, visit <http://www.gtlcenter.org/products-resources/evaluating-specialized-instructional-support-personnel-supplement-practical-guide>.



Evaluating Early Childhood Educators: Prekindergarten Through Third Grade

Supplement to the Practical Guide to Designing Teacher Evaluation Systems

Scheduled for Release in Sept. 2014

In response to requests from the field, the GTL Center enlisted the Center on Enhancing Early Learning Outcomes (CEELO) to develop this supplemental guide for early childhood teachers. This guide considers the current landscape of teacher evaluation systems and offers considerations for the inclusion of early childhood teachers.



Contact Us: Questions or Technical Assistance Requests



Contact Information

Phone: 877.322.8700

E-Mail: gtlcenter@air.org

Address: 1000 Thomas Jefferson Street NW
Washington, DC 20007-3835

Website: www.gtlcenter.org



Need Technical Assistance?

Submit a request at:

[www.gtlcenter.org/technical-assistance/
request-ta/](http://www.gtlcenter.org/technical-assistance/request-ta/)

Or contact us directly!

Social Media



www.facebook.com/gtlcenter



www.twitter.com/gtlcenter

The GTL Center is part of the U.S. Department of Education's Comprehensive Centers program, which consists of seven national content centers and 15 regional centers supporting all 50 states. The GTL Center is administered by American Institutes for Research and its partners—the Council of Chief State School Officers and Public Impact—under a five-year cooperative agreement with the U.S. Department of Education.