

Iowa's IFSP & IEP Web System

Meghan Wolfe, Early ACCESS, Part C
Dee Gethmann, Early Childhood Special
Education, Part B 619

*Improving Data, Improving Outcomes Conference
September 2014*



Brief Description: Iowa's System

Iowa Area Education Agencies and School Districts 2014-15



Brief Description: History of IFSP

- 2006 Specifications and Programming of Web IFSP
- 2008-2010 Alpha and Beta Testing Completed
- 9 Regional Grantees and 3 Signatory Agencies Staff Trained
- July 1, 2010 System Online
- By October 1, 2010 All Children and New Referrals in Web IFSP
- October 2010 Programming Change Due to Compliance
- 2012 Federal Part C Regulations Released
- July 1, 2013 Changes to Web IFSP Released



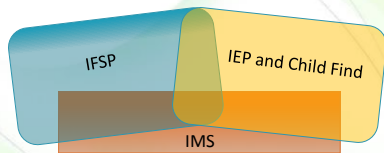
Brief Description: History of IEP

- 1990 - 1992 – Iowa Dept. of Ed created State IEP Committee
 - Informational Resources
 - Professional Development Materials
 - State Model IEP
 - ✓ Paper or Computer-Based System (Not Web)
 - ✓ 12 of 15 AEAs used State Model
- 1991 – Operations Governance Committee established
- 2002 – All AEAs agreed to use common IEP statewide
 - Work began on a web-based application
- 2005 – Web-based IEP statewide
- 2007 – All AEAs agreed to work on common statewide special education procedures and documentation manual
- 2009 – Statewide Special Education Procedures and IEP Documentation manual



Brief Description: Current System

Integrated System

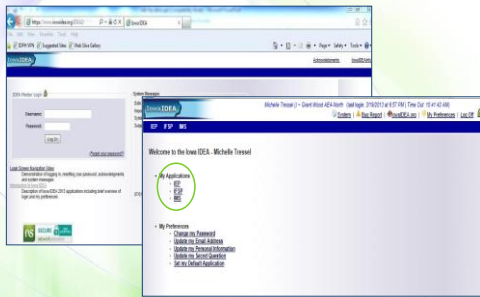


Iowa IDEA Users

- Administrative Support
- IFSP Service Coordinators
- IFSP and IEP Service Providers
- Web IFSP and Web IEP Administrators
- Area Education Agency Regional Administration (*Part C Grantees or Intermediate Education Agencies*)
- State-Level IFSP and IEP Consultants

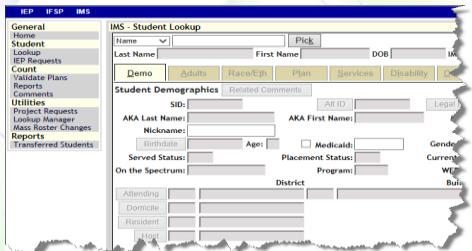


Iowa IDEA Log In & Usability



Iowa IDEA

Web IMS



Elements of Iowa's web IFSP

- Intake (begins 45 day timeline)
- Family/Child Information
 - Provider
 - Insurance
 - Statements (family assessment)
- Post Referral Screening
 - Parental Rights
 - Consent for Screening
 - Consent for Evaluation
 - Prior Written Notice
- Evaluation/Assessment
 - All areas of development, plus health, hearing, vision, & nutrition
- Forms Tab
 - Meeting Notice
 - Prior Written Notice
 - ECO- Child Outcomes Summary
 - Exchanges and Releases of Information

Elements of Iowa's web IFSP

- Meeting
 - Eligibility
 - Meeting Participants
 - Parental Rights
 - Consent for Services
 - Consent to Bill Insurance
- Outcomes
- Services
 - Location, Method, Duration,
 - Frequency, Projected Start Date
 - Provider Log Notes
- Transition
 - Part B Consideration
 - Family Involvement
 - Strategies to Prepare Child



Intake (C-5 & C-6)



View of web IFSP



Services are considered timely if provided within 30 days of the consent for the service



Page 10 of 10

MS screen

IMS screen

45 Day Timeline (C-7)

Intake/referral entered, 45 day timeline begins.

Meeting tab is where providers enter date of meeting

Missed 45 day

45 Day Timeline (C-7)

Intake/referral entered, 45 day timeline begins.

Meeting tab is where providers enter date of meeting

IMS screen

Transition from C to B

Where web IFSP integrates with web IEP- children referred from Part C to Part B and child find begins

Part B Consideration

☒ Child will be referred for Part B eligibility determination

Date AEA notified:

☐ Parent declined consideration for Part B eligibility determination

☐ Not applicable (Data indicate child not potentially Part B eligible)

Watch training video regarding transition:

<https://aea111.eduvision.tv/ajax/./Default.aspx?q=xIMDqFli0dm3Lzk2HS3rvq%3d%3d>


Elements of IEP

Tabs:

- Family and Student Information
- Meeting Information and Attendance
- IEP Considerations
- Goals
- Services and Activities
- Additional Information
- Evaluation/Re-Evaluation

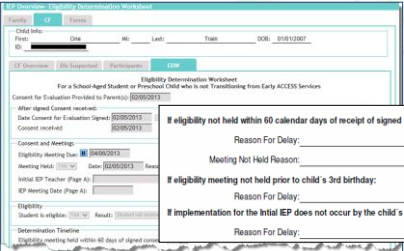
Forms:

- Agreement to Excuse; ECO; Meeting Notices;
- Behavior Intervention Plans; Summary;
- Eligibility Determination



Elements of IEP

Eligibility Determination (B11 and B12 Data)





Eligibility Determination Worksheet
For a School-Aged Student or Preschool Child who is not Transferring from Early ACCESS Services

Consent for Evaluation Provided to Parent(s): 02/06/2013

After signed Consent received:
Date Consent for Evaluation Signed: 02/06/2013
Consent received: 02/06/2013

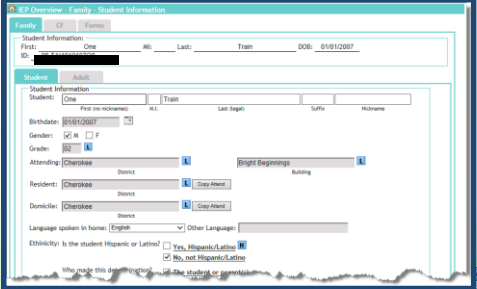
Consent and Meetings
Eligibility Meeting Date: 04/06/2013
Meeting Held: ☒ Yes ☐ No Date: 02/06/2013
IEP Meeting Date (Page A):
Eligibility Meeting Held within 60 days of signed consent: ☒ Yes ☐ No

Reason For Delay:
Meeting Not Held Reason:
If eligibility meeting not held prior to child's 3rd birthday:
Reason For Delay:
If implementation for the Initial IEP does not occur by the child's 3rd Birthday:
Reason For Delay:

Elements of IEP

Family and Student Tab




IEP Overview - Family - Student Information

Family **CF** **Forms**

Student Information
First Name: One Last Name: One DOB: 01/01/2007

Student Information
Student: One Birthdate: 01/01/2007 Gender: ☒ M ☐ F Grade: 02
Attending: Charleston Resident: Charleston Domestic: Charleston Language spoken in home: English Ethnicity: ☒ Yes, Hispanic/Latino ☐ No, not Hispanic/Latino



Elements of IEP

Web IEP – Meeting Information

The screenshot shows the 'Meeting Information' tab of the IEP Overview. It includes fields for Child Info (First, Last, DOB), IEP Information (Grade, Teacher/Svc Prov, Type, Meeting Date, Duration, Re-evaluation to date, Procedural safeguards, Rights will transfer at, Notification, Outside Written Input), and a section for Reviewer (Reviewed by, Method, Date).

Elements of IEP

Web IEP - Attendees

The screenshot shows the 'Attendees' tab of the IEP Overview. It includes fields for Child Info (First, Last, DOB) and a table for Participants with columns for Name and Role. The Role column has checkboxes for Parent, Student, LEA Rep/Designee, Gen Ed Tchr, Sp Ed Tchr, and Other. An 'Add' button is at the bottom.

Elements of IEP

Web IEP – Goals and Graphing Capability



Iowa IDEA Features

(#) behind each tab
Indicates how many fields still need to be completed on a tab

Iowa IDEA Features

Incomplete Data Report

Page	Field
Early Intervention Services	Service SC: Location
Early Intervention Services	Service SC: With Whom
Early Intervention Services	Service SC: Method
Early Intervention Services	Service SC: Intensity Minutes
Early Intervention Services	Consent Signed signature date must be completed.
Early Intervention Services	Service SI: Location
Early Intervention Services	Service SI: With Whom
Early Intervention Services	Service SI: Method

Iowa IDEA Features

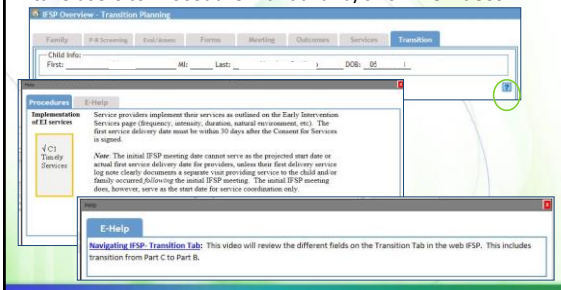
Bug Reports

Ability to submit screenshots and descriptions of system issue for TA

Iowa IDEA Features

“H” (help) button

Placed throughout application are help buttons, these take users to Procedure manual and/or online videos



Iowa IDEA Features

- Outputs; IEP: Nightly Exports; IFSP: Agency Data
- Student/Child List Sort
- Enhanced Passwords
 - Utilities
 - Child Find Admin Tool
 - Recycle Bin
 - Student List Sort
 - Review 1, Review 2, Ready to Validate



Practice and Supports

Resources

- AEA Part C Procedures Manual
- Special Education Procedures Manual
- Information on Updates & Releases
- Data Entry Personnel meetings
- Oversight Governance Committee
- Operations Work Group minutes




Lessons Learned and Next Steps

Lessons Learned

- Have providers involved in programming and testing
- Statewide training
- Identify data and reports
- Don't program off paper templates
- Plan funds and time for revisions
- Have check boxes and/or lists

Next Step.... Planning for future

- IFSP/IEP Task Teams
 - Practitioners
 - Data managers and programmers



Iowa IDEA
<http://www.iowaideainfo.org/>

Meghan Wolfe -
Meghan.Wolfe@idph.iowa.gov

Dee Gethmann –
Dee.Gethmann@iowa.gov