

# **THEORY OF ACTION FOR THE SSIP: Graphic Examples**

# OSEP Theory of Action

**Vision:** All infants, toddlers, children, and youth with disabilities will achieve improved educational results and functional outcomes. : All infants, toddlers, children, and youth with disabilities will receive individualized services in natural settings.

## Strands of Action

## If OSEP

## Then

## Then

## Then

### Leadership

... provides guidance in a timely and responsive manner  
...communicates its vision effectively

... States will have the information they need to align their activities to OSEP's vision  
...States will promote higher expectations for CWD

### Collaboration

... engages strategically with other ED programs, Federal agencies, States, grantees and outside organizations

... OSEP will more effectively leverage resources to improve services for CWD  
OSEP will increase the reach and impact of its work

### Technical Assistance

... provides differentiated resources and evidence-based information  
...supports the development of effective personnel that support CWD

... States have increased capacity to support LEAs and EIS providers to deliver effective interventions  
...the number of effective personnel will increase

...States, LEAs and EIS providers will have higher expectations for CWD, will access resources to provide effective interventions and services to infants, toddlers, children, and youth with disabilities

...All infants, toddlers, children, and youth with disabilities will receive individualized services in natural settings and demonstrate improved educational results and functional outcomes

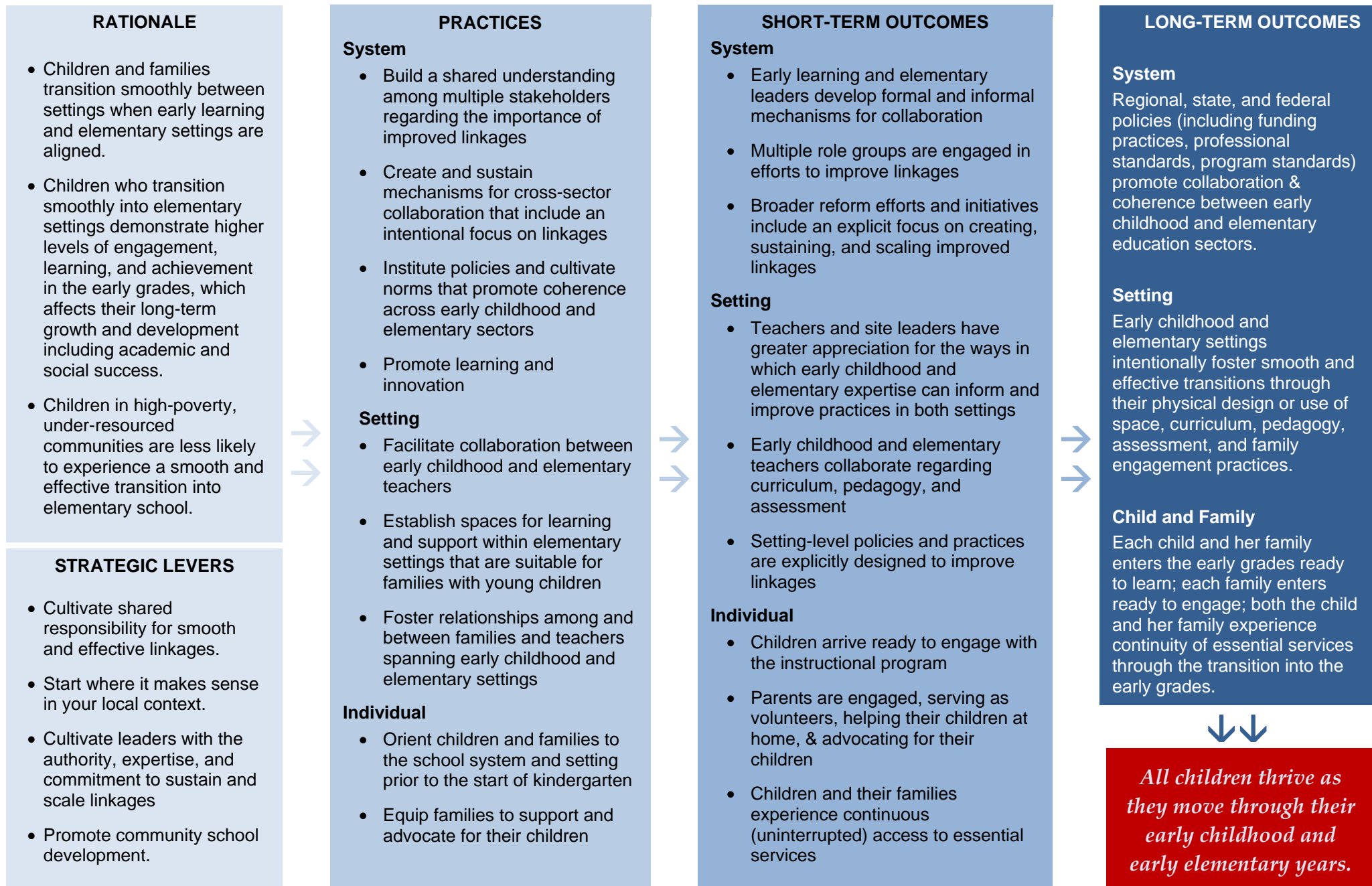
### Accountability

... holds States and grantees accountable for clearly identified, measureable results  
...engages States in planning, assessment and evaluation

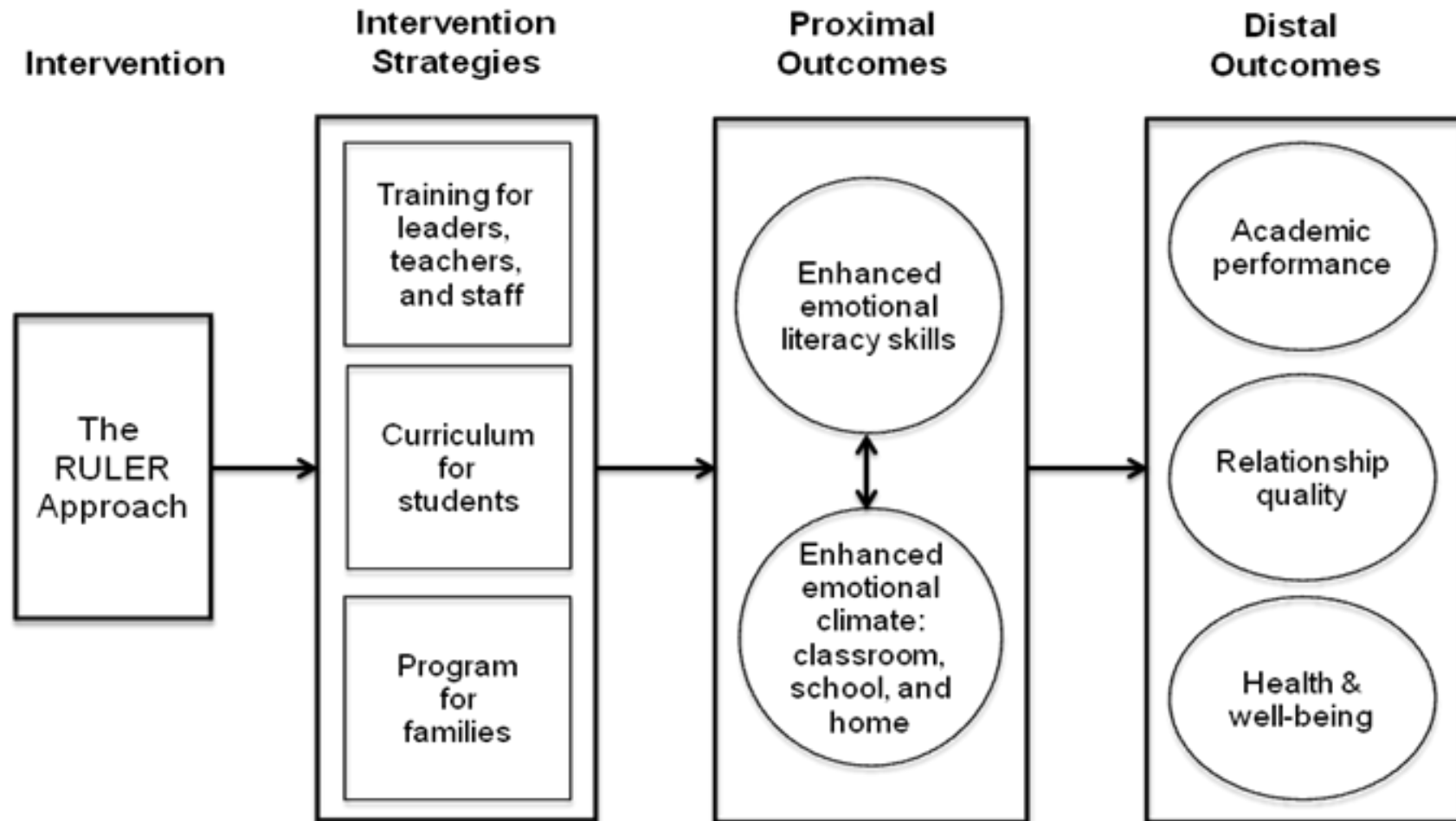
... States put systems in place that lead to improved results for CWD and protect the rights of children and families

**FIGURE 1. A THEORY OF CHANGE FOR EARLY CHILDHOOD & COMMUNITY SCHOOL LINKAGES:**

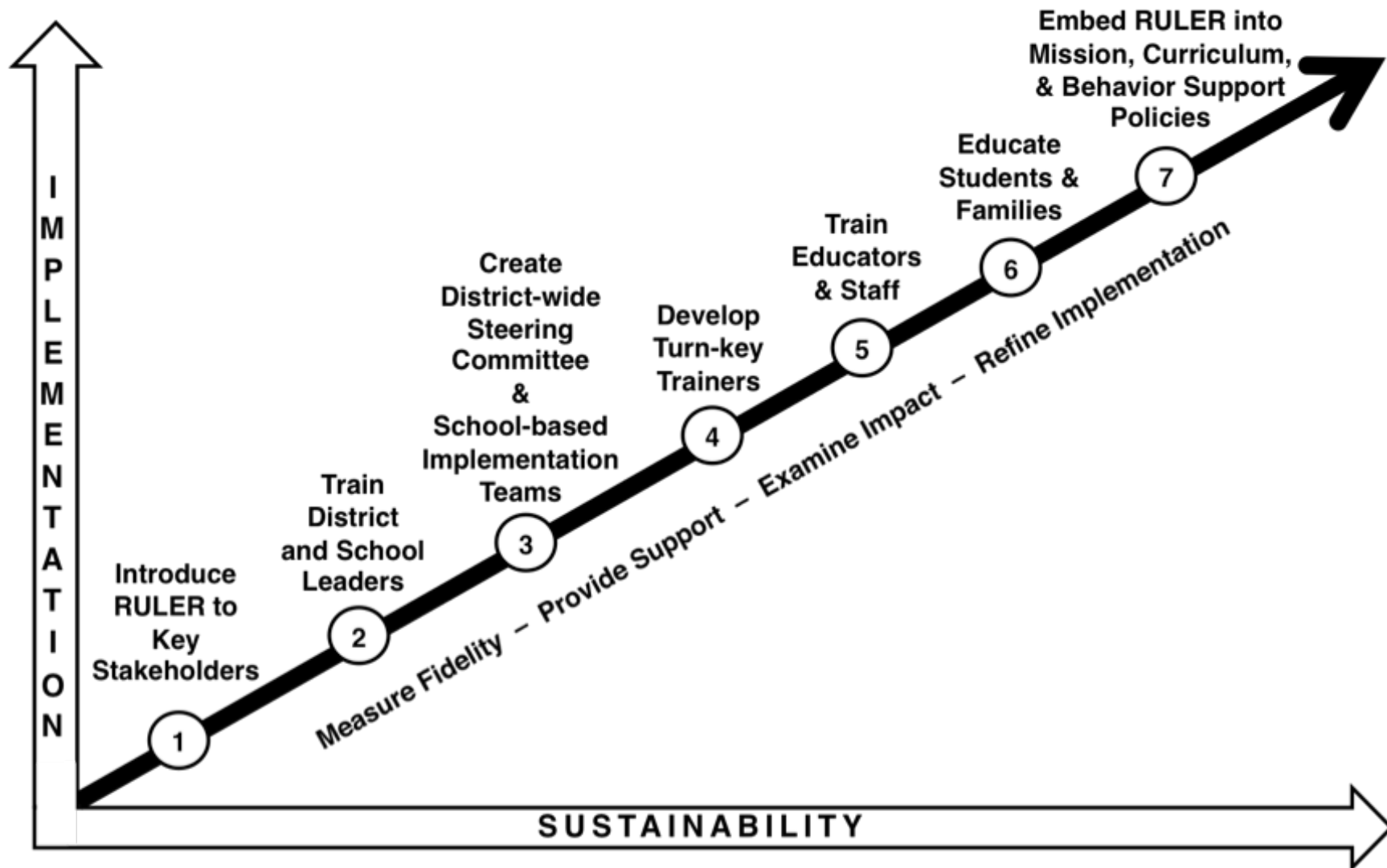
Creating coherence between early learning and elementary education at the level of systems, settings, and individual children and families.



## The RULER Approach Theory of Change for Students

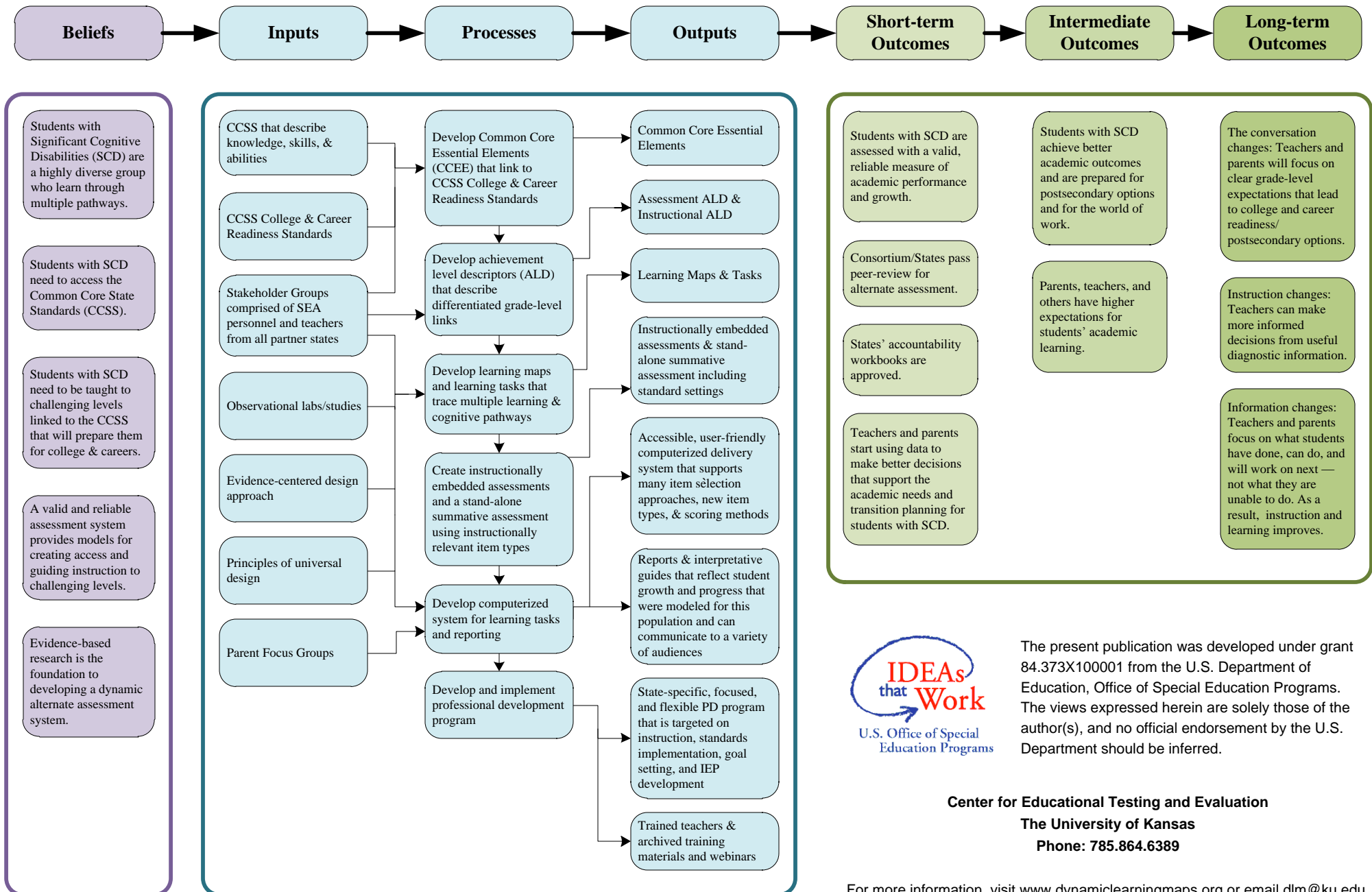


## Year 1 Implementation Plan for RULER



# Theory of Action

Updated February 2012



The present publication was developed under grant 84.373X100001 from the U.S. Department of Education, Office of Special Education Programs. The views expressed herein are solely those of the author(s), and no official endorsement by the U.S. Department should be inferred.

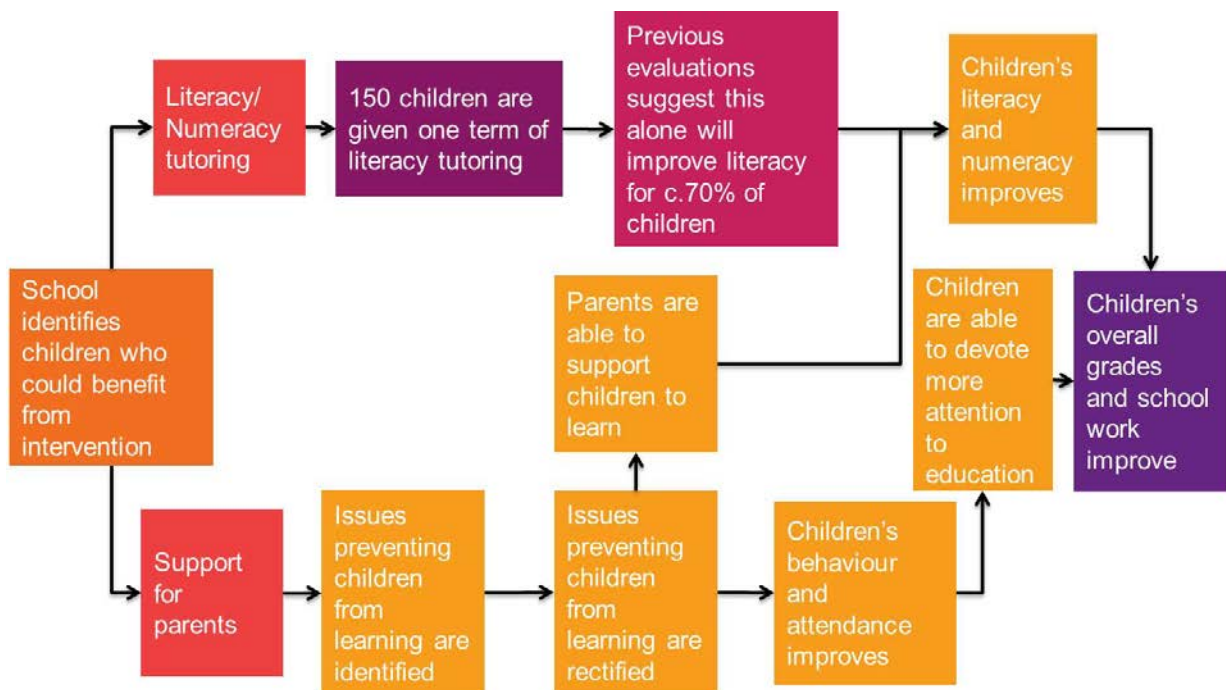
**Center for Educational Testing and Evaluation**  
**The University of Kansas**  
**Phone: 785.864.6389**

For more information, visit [www.dynamiclearningmaps.org](http://www.dynamiclearningmaps.org) or email [d1m@ku.edu](mailto:d1m@ku.edu).

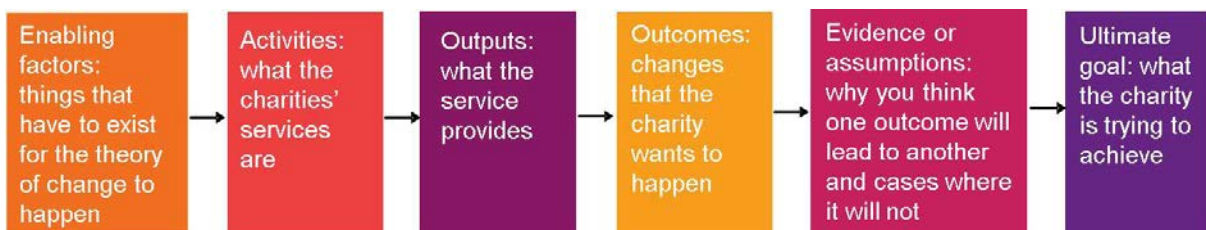


Figure 1 shows a simple example of a theory of change for a charity that intends to improve children's grades and school work, with enabling factors, activities, outputs, outcomes and evidence. The charity identifies which children will benefit from the intervention, and it has three activities: literacy and numeracy tutoring; support for parents; and support for teachers. In the literacy and numeracy tutoring, 150 children are given one term of literacy tutoring, which evidence suggests will improve literacy for 70% of children. This is supplemented by support for parents, which will help the charity to identify why some children are struggling to learn, leading to children being able to devote more attention and the grades and school work going up.

**Figure 1: Need: Children are falling behind at school because of problems at home**



## Key



New Philanthropy Capital  
 185 Park Street, London SE1 9BL  
 Registered charity No 1091450  
 A company limited by guarantee  
 Registered in England and Wales No 4244715  
[www.thinkNPC.org](http://www.thinkNPC.org)